

Beenleigh State High School **ANTI-BULLYING POLICY**



We Care We Are Responsible We Achieve

Rationale

All schools in Queensland are committed to taking action to protect students from bullying and to respond appropriately when bullying does occur. At Beenleigh State High school because we care, we value all members of our school community. We are responsible and therefore committed to working towards a safe and supportive school so that we can all achieve to our maximum potential. At Beenleigh State High School we believe:

- Each person has the right to be valued and treated with respect.
- Each person has the right to participate in a pleasant, healthy and safe environment.
- Each person has the right to develop in a positive learning environment.
- Each person has the right to be valued for his/her individuality, to be cared for, trusted and encouraged to express him/herself in a supportive school environment.

School community beliefs about bullying

It is important that students, staff and parents/carers have a shared understanding of what bullying is, how it impacts on people and how bullying is responded to at Beenleigh State High School.

Bullying is repeated oppression, psychological or physical, of a less powerful person by more powerful person or groups of persons.

Bullying might include;

- Direct physical threats or assaults
- Social exclusion of one by another or a group
- Verbal insults or spreading rumours
- Sending of threatening or demeaning messages by SMS, Email, Internet
- Non verbal signals

At Beenleigh State High School bullying in all its forms is not accepted and all members of Beenleigh State High School accept their responsibility to promote positive relationships and to prevent bullying.

WE CARE

WE ARE RESPONSIBLE

WE ACHIEVE

Our pledge to you is that if you are being bullied, we will listen and act.

Educational Programs

It is important that students, staff and parents/carers understand what bullying is, how it impacts on people and how bullying is responded to at Beenleigh State High. We use the following educational strategies:

- ✎ Within teaching and learning programs, including curriculum and alternative programs
- ✎ Information Sheets for parents/carers
- ✎ Staff professional development

Prevention Programs

Effective social skills and positive relationships act to prevent bullying. At Beenleigh State High School we promote effective social skills and positive relationships through:

- ✎ School-Wide Positive Behaviour Support
- ✎ An active and supportive Administration and Middle management team.
- ✎ Student Services Management Group
- ✎ Year coordinators who are in essence Case Managers for students with problems in their year levels. Year coordinators often become among the first people to hear about any bullying behaviour and will take appropriate action including regular contact with parents.
- ✎ A multi-age Care Group System where students from all year levels meet together and as such students right from year 8 are mixing with students from all year levels who can provide support advice and friendship to each other.
- ✎ Student Leadership Team
- ✎ Curriculum that is relevant to the needs of the students and taught with care.
- ✎ Alternative Programs and Human Relationship Education Programs for all year levels that emphasize tolerance and non-violence such as Rock & Water, Team Up and Girl's Group
- ✎ Extra-Curricular programs to support and challenge students and to provide them with opportunities to develop new and important life skills
- ✎ Circle Time

Responses to bullying and intervention strategies

Reports of bullying will be investigated and acted upon. Responses to bullying might include support for targets of bullying and perpetrators and/or disciplinary measures.

The teacher will intervene to stop the bullying. The teacher may conduct and complete a mediation contract or refer the situation to a Year Coordinator, HOD or Deputy Principal if serious.

A Year Coordinator may employ one of the following intervention strategies:

- Traditional disciplinary approach
- Strengthening the target
- Mediation
- Restorative practice
- Support group method
- Method of shared concern

A HOD or Deputy Principal may:

- conduct no-blame mediations and draw up contracts between the victim and the accused
- keep track of all bullying reports from all parts of the school
- give students feedback on what has happened with their report
- offer student strategies to cope if the incident occurs again

At Beenleigh State High School we support targets and perpetrators through:

- Providing Counselling and Support
- Conducting bullying interviews
- Increased supervision of at risk areas
- Social skills programs for targets and perpetrators
- Teaching students how to cooperate and “get on” with others
- Working out a behaviour plan or playground plan for some students, to keep everyone safe
- Teaching students about conflict and bullying
- Running programs that help students become more confident
- Running anti-bullying workshops
- Having special meetings to work things out with the involved students
- Having students complete classroom tasks about bullying in school subjects. Give detentions, suspensions or exclusions to students who bully others.

At Beenleigh State High School depending on the severity of the bullying or harassment any or all the following consequences might take place.

- ✎ No-blame discussion with teacher or DP / HODS
- ✎ Signing of a formal contract
- ✎ Method of Shared Concern or Restorative Practices
- ✎ Parents contacted
- ✎ Family meetings
- ✎ Detentions
- ✎ Community service (referred by Admin)
- ✎ Suspension and recommendation for exclusion where bullying is so severe that no other form of consequence would be deemed adequate

SERIOUS AND REPEATED INCIDENTS

Not all cases of bullying will be easy to deal with but these cases will be dealt with through providing support for victims and their families and consequences for bullies.

In serious cases: mediation between parties will be encouraged and the unacceptability of the deed (not doer) will be emphasized. The effect the deed has had on all parties involved will be explored. Our aim at this stage is to help the perpetrator see that a change in behaviour is required, that the victim feels supported and that the problem is solved with arrangements for restitution to be made.

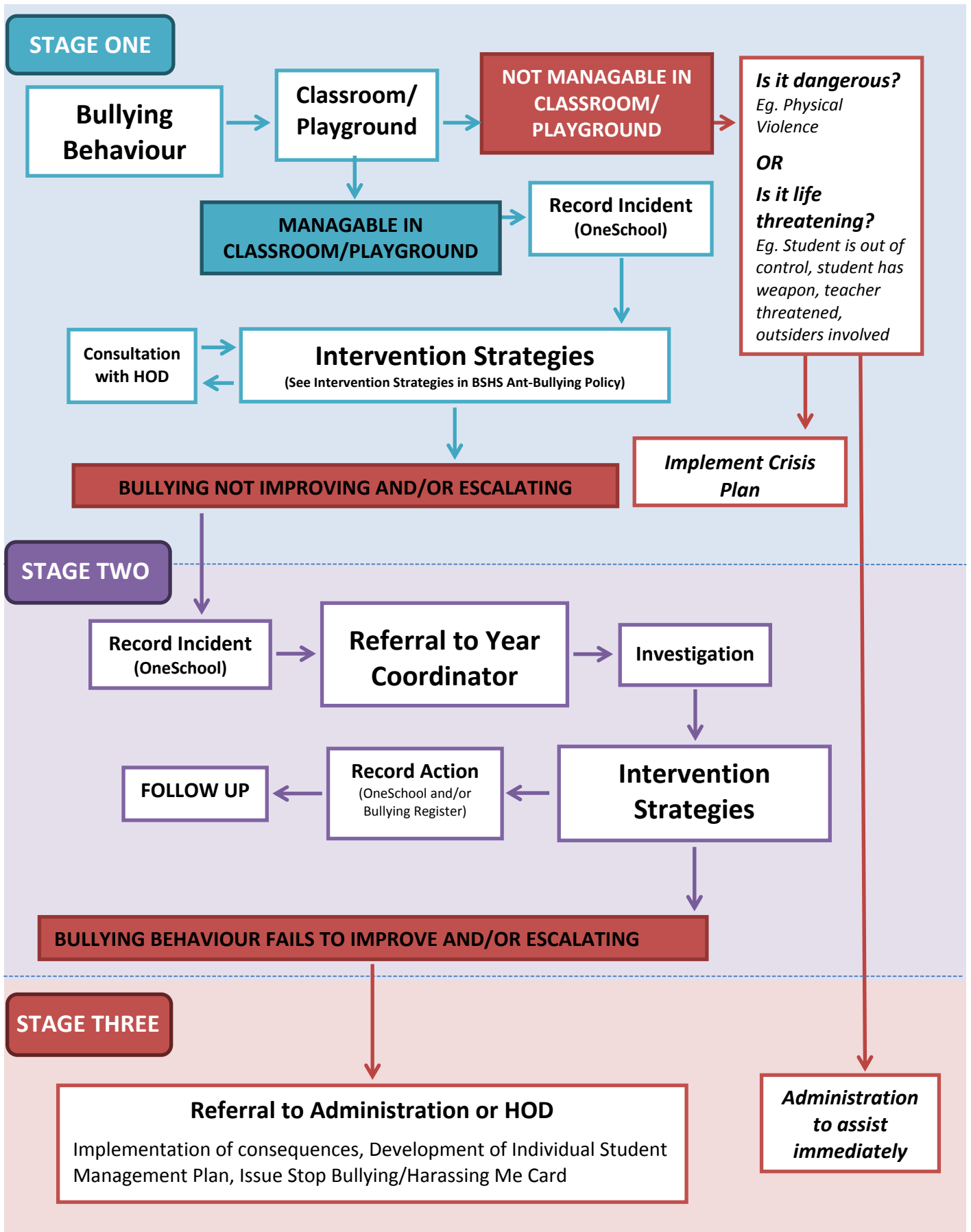
Reporting and monitoring bullying

At Beenleigh State High School reports of bullying are taken seriously. Students and parents/carers may report bullying in the following ways:

- ✎ Directly to a member of staff
- ✎ Via the annual /biannual bully service
- ✎ Using a Bullying Report Form

Reports of bullying will be collated and monitored to inform the school community about the extent of bullying and to identify particular areas of concern for future action. *See Bullying Intervention Flowchart

Bullying Intervention Flowchart



Some related websites

School Wide Positive Behaviour Support

www.learningplace.com.au/deliver/content.asp?pid=24668

Alannah and Madeline Foundation

<http://www.amf.org.au/AboutUs/>

BOUNCE BACK!

<http://www.bounceback.com.au/>

FRIENDS for Life

www.friendsinfo.net/index.html

Friendly Schools and Families Program

<http://www.friendlyschools.com.au/about.php>

Kids Helpline

<http://www.kidshelp.com.au/>

MindMatters

<http://www.mindmatters.edu.au/default.asp>

ReachOut

<http://au.reachout.com>

National Centre Against Bullying

<http://www.ncab.org.au/about/>

National Safe Schools Framework

http://www.dest.gov.au/sectors/school_education/publications_resources/profiles/national_safe_schools_framework.htm

You Can Do It!

www.youcandoit.com.au